



HR ESTATE AGENTS

4 Bedrooms

House - Detached

Price Guide

£475,000

Located in

Warwick





Whitehead Drive

Warwick | CV35 9PW



Welcome to Whitehead Drive, a beautifully presented four-bedroom detached family home, ideally located in the highly sought-after village of Wellesbourne. Offering generous living space, a versatile layout, and delightful countryside views, this property is perfect for modern family living.

Upon entering, you are welcomed by a spacious entrance hall that sets the tone for the rest of the home. The impressive lounge features a charming fireplace and a bay window, creating a warm and inviting space to relax. The heart of the home is the large kitchen, complete with fitted units and a breakfast bar, with direct access to the garden—ideal for both everyday living and entertaining. The ground floor further benefits from a separate dining room, a bright conservatory overlooking the garden, and a convenient W/C.

Upstairs, the property offers four generously sized bedrooms, including a well-proportioned master bedroom with its own en-suite shower room. A modern family bathroom serves the remaining bedrooms, making this an ideal home for growing families.

Externally, the property boasts a well-maintained rear garden, perfect for relaxing or entertaining guests, with the added benefit of picturesque field views beyond. To the front, there is a driveway providing off-road parking for multiple vehicles, along with an integral garage.

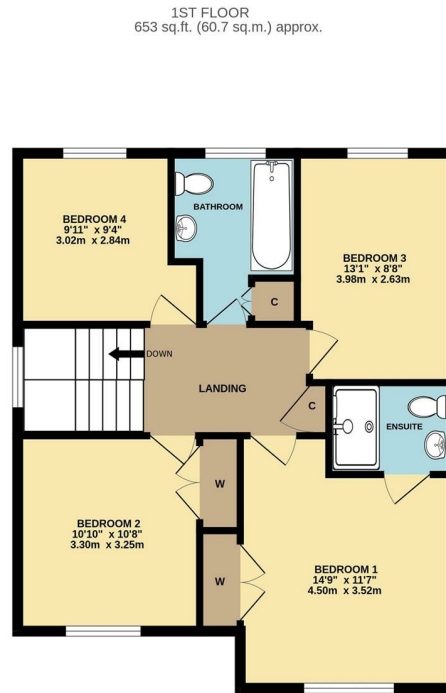
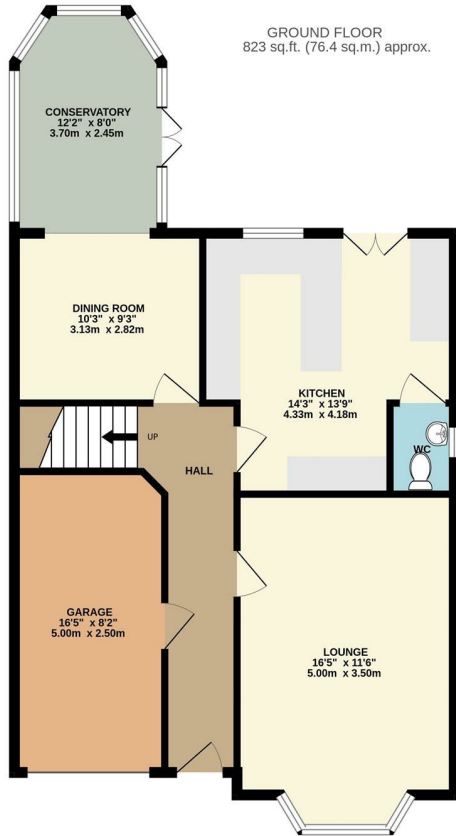
Wellesbourne is a thriving and well-connected village, offering a range of local amenities including shops, cafés, schools, and a popular weekly market. Situated within easy reach of Stratford-upon-Avon and Warwick, the location provides excellent transport links and access to beautiful surrounding countryside.

Whitehead Drive

£475,000



- VILLAGE LOCATION
- 4 BEDROOMS
- BEAUTIFULLY PRESENTED
- STUNNING VIEWS
- DETACHED
- DRIVEWAY AND GARAGE



TOTAL FLOOR AREA : 1476 sq.ft. (137.1 sq.m.) approx.

Whilst every attempt has been made to ensure the accuracy of the floorplan contained here, measurements of doors, windows, rooms and any other items are approximate and no responsibility is taken for any error, omission or mis-statement. This plan is for illustrative purposes only and should be used as such by any prospective purchaser. The services, systems and appliances shown have not been tested and no guarantee as to their operability or efficiency can be given.

Made with Metropix 62026

Council Tax Band F

Local Authority

Agents Note: Whilst every care has been taken to prepare these particulars, they are for guidance purposes only. All measurements are approximate and are for general guidance purposes only and whilst every care has been taken to ensure their accuracy, they should not be relied upon and potential buyers/tenants are advised to recheck the measurements.

Energy Efficiency Rating		
	Current	Potential
Very energy efficient - lower running costs		
(92 plus) A		
(81-91) B		
(69-80) C		
(55-68) D		
(39-54) E		
(21-38) F		
(1-20) G		
Not energy efficient - higher running costs		
England & Wales	EU Directive 2002/91/EC	

Number Three Siskin Drive
Coventry
CV3 4FJ

HR ESTATE AGENTS